

B&C HOODED FULL ZIP /MEN

> WM 647



REGULAR FIT

- Hooded sweatshirt with full zip
- Tone-on-tone and **covered zip with a piping for overall decoration**
- 3 Paneled hood with internal earphone loops
- Single jersey lined hood with metallic eyelets and flat drawstrings with double-stitched butts
- Twill tape inside neckline
- 2 front kangaroo pockets with reinforced seams
- Right-hand inside pocket has opening for earphone cord
- Topstitching flatlock on shoulders and armholes for better strength
- Drop shoulder seams for better comfort
- 1x1 Ribbed cuffs and bottom hem
- Modern cut
- Side seams



* COLOURS AVAILABLE IN XXXL

- 80% **combed** cotton - 20% polyester
- PST / Perfect Sweat Technology
Low Shrinkage / Fleece brushed inside
- 280 g/m²
- S - M - L - XL - XXL - XXXL*
- 5 pcs/pack & 20 pcs/carton

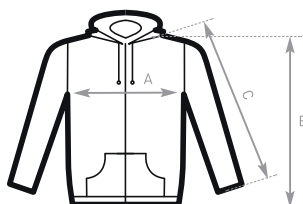
* ONLY AVAILABLE IN BLACK, NAVY, RED AND HEATHER GREY



**DUO♂
CONCEPT**

with B&C Hooded Full Zip /women

EXISTS IN B&C HOODED /KIDS



SIZES [CM]

B&C HOODED FULL ZIP /MEN	XS	S	M	L	XL	XXL	XXXL
A HALF CHEST	-	55,7	58,7	61,7	65,7	69,7	73,7
B BODY LENGTH	-	69,1	71,3	71,5	71,7	74	77,2
C SLEEVE LENGTH	-	62,2	63,1	64,1	65	66,6	68,2



according to/d'après
Oeko-Tex Standard 100
No 0712036
Centexbel