

B&C BODYWARMER /MEN

JM 930



BODYWARMER

6.4 EDITION

Trendy down bodywarmer

OUT: 100% Taffeta Nylon | Waterproof

IN: 100% padded polyester lining (200 g/m²)

S - M - L - XL - XXL - XXXL*

5 pcs/pack & 10 pcs/carton

* ONLY AVAILABLE IN BLACK, NAVY AND RED

Easy decoration thanks to a large back area without stitching and invisible zip opening



Full-zip opening with zip puller

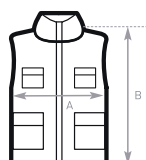
2 front pockets with zip and zip pullers, 1 inner wallet pocket



Open hem
Longer back



DUO♂
CONCEPT
with B&C Zen+ / women



SIZES [CM]

B&C BODYWARMER /MEN	XS	S	M	L	XL	XXL	XXXL
A HALF CHEST	-	58	60	62	65	67	69
B BODY LENGTH	-	67	69	71	73	77	79

JACKET
COLLECTION