

BODYWARMER

6.4 EDITION



Padded hood with feather touch, removable with a zip



Easy access for decoration via an invisible zip in the middle of the back



Adjustable hood with thick lace



Large back area without stitching for easy decoration

Trendy down feminine bodywarmer

OUT: 100% Taffeta Nylon | Waterproof

IN: 100% padded Taffeta polyester lining with feather touch

XS - S - M - L - XL - XXL

1 pc/pack & 10 pcs/carton



Feminine cut

2 front pockets

Adjustable bottom hem (with draw cord & stoppers)



Windproof



Thermo-isolated



Showerproof

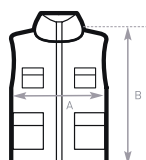


Water-repellent



**DU♂
CONCEPT**

with B&C
Bodywarmer /men



SIZES [CM]

B&C ZEN+ /WOMEN		XS	S	M	L	XL	XXL	XXXL
A	HALF CHEST	52,5	55	57,5	60	62,5	65	-
B	BODY LENGTH	59	60	61,5	62,5	63,5	64,5	-

**JACKET
COLLECTION**